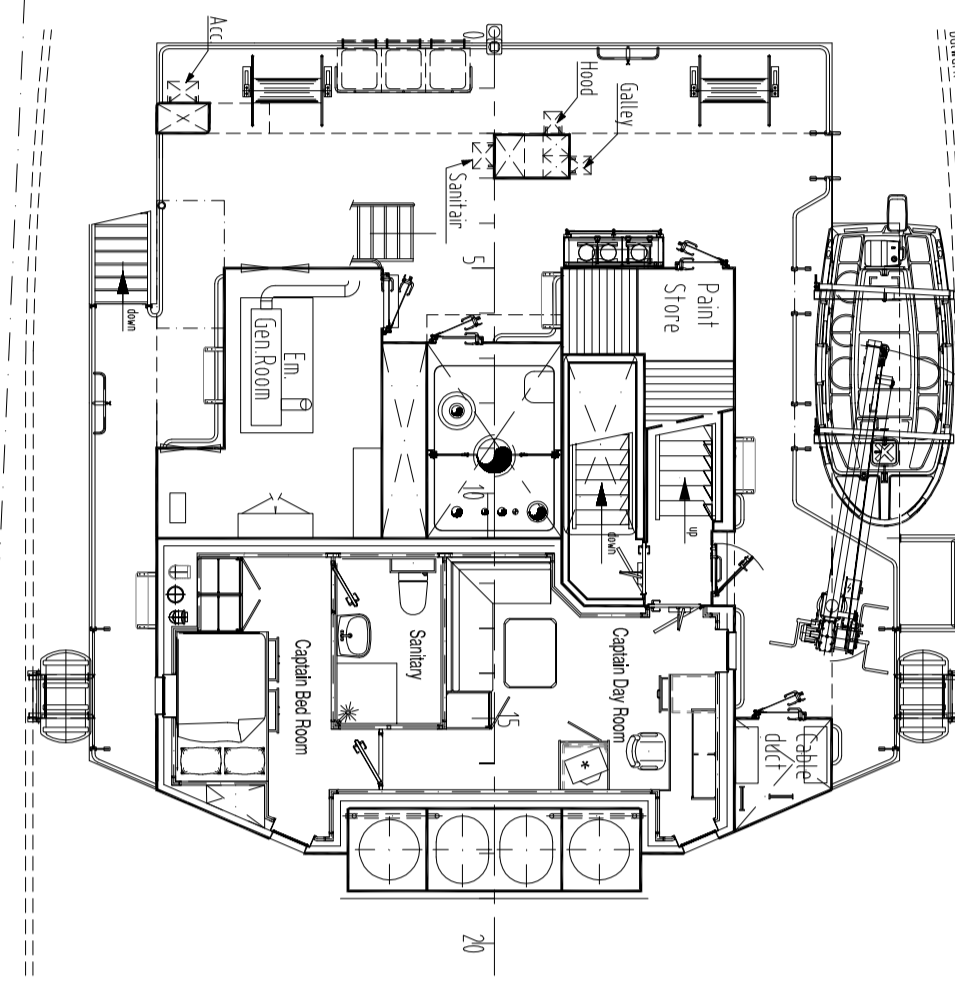
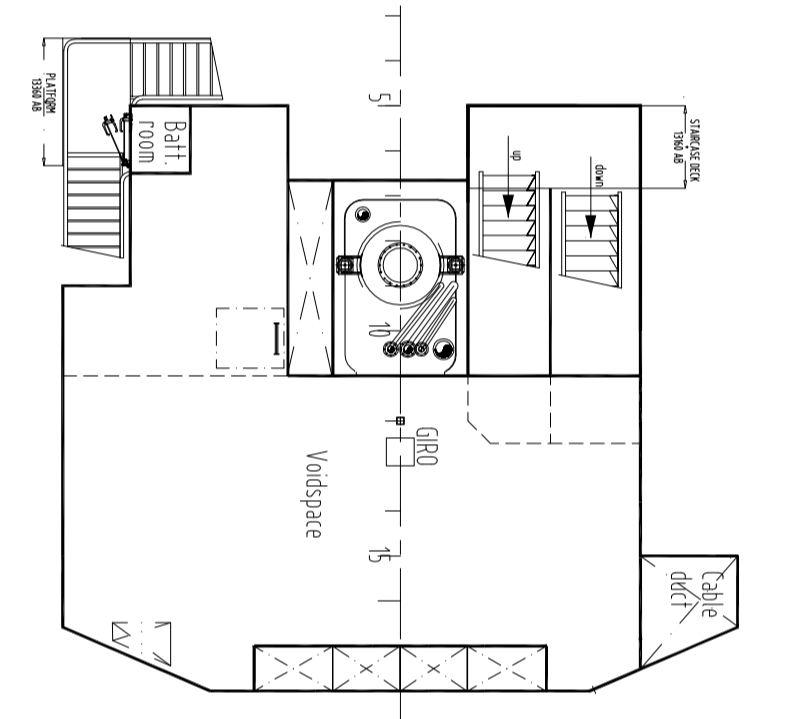


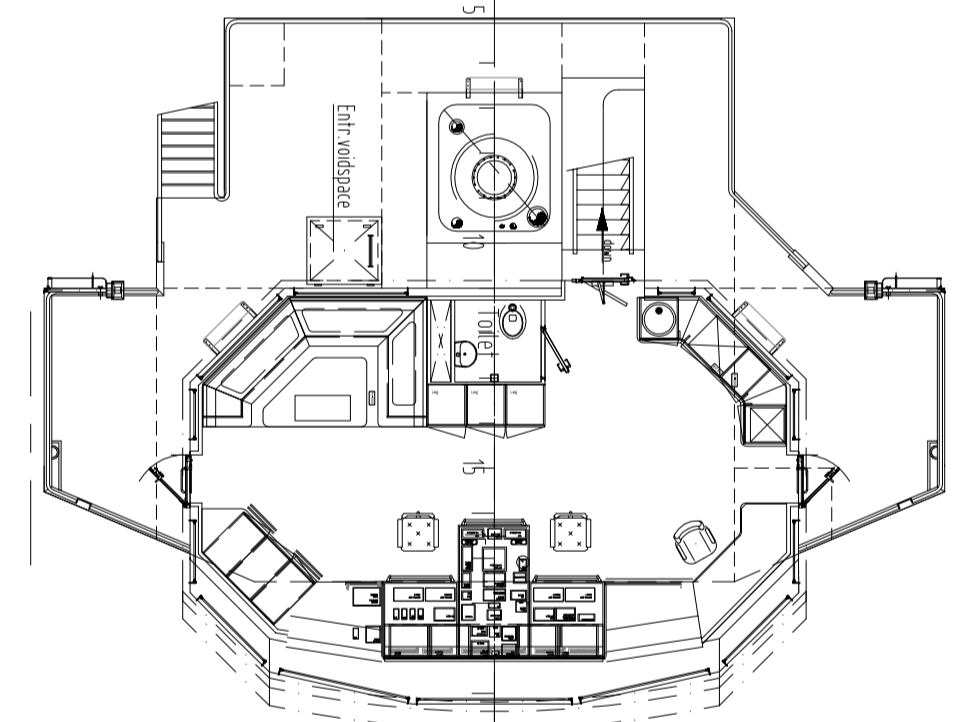
BOAT DECK



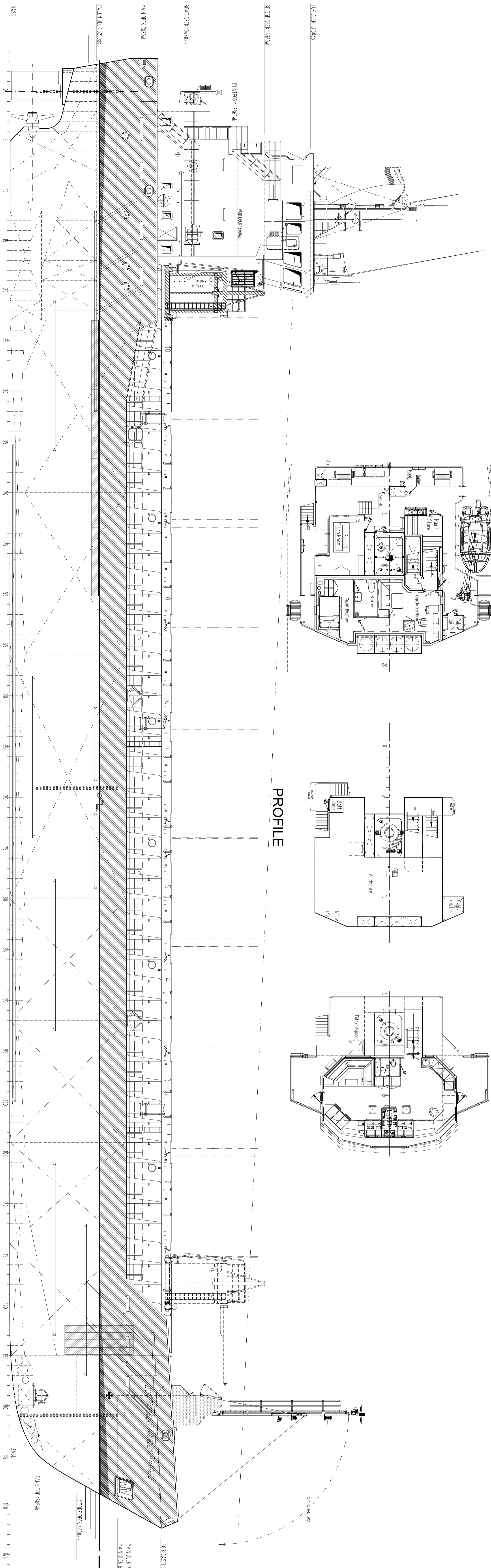
VOID DECK



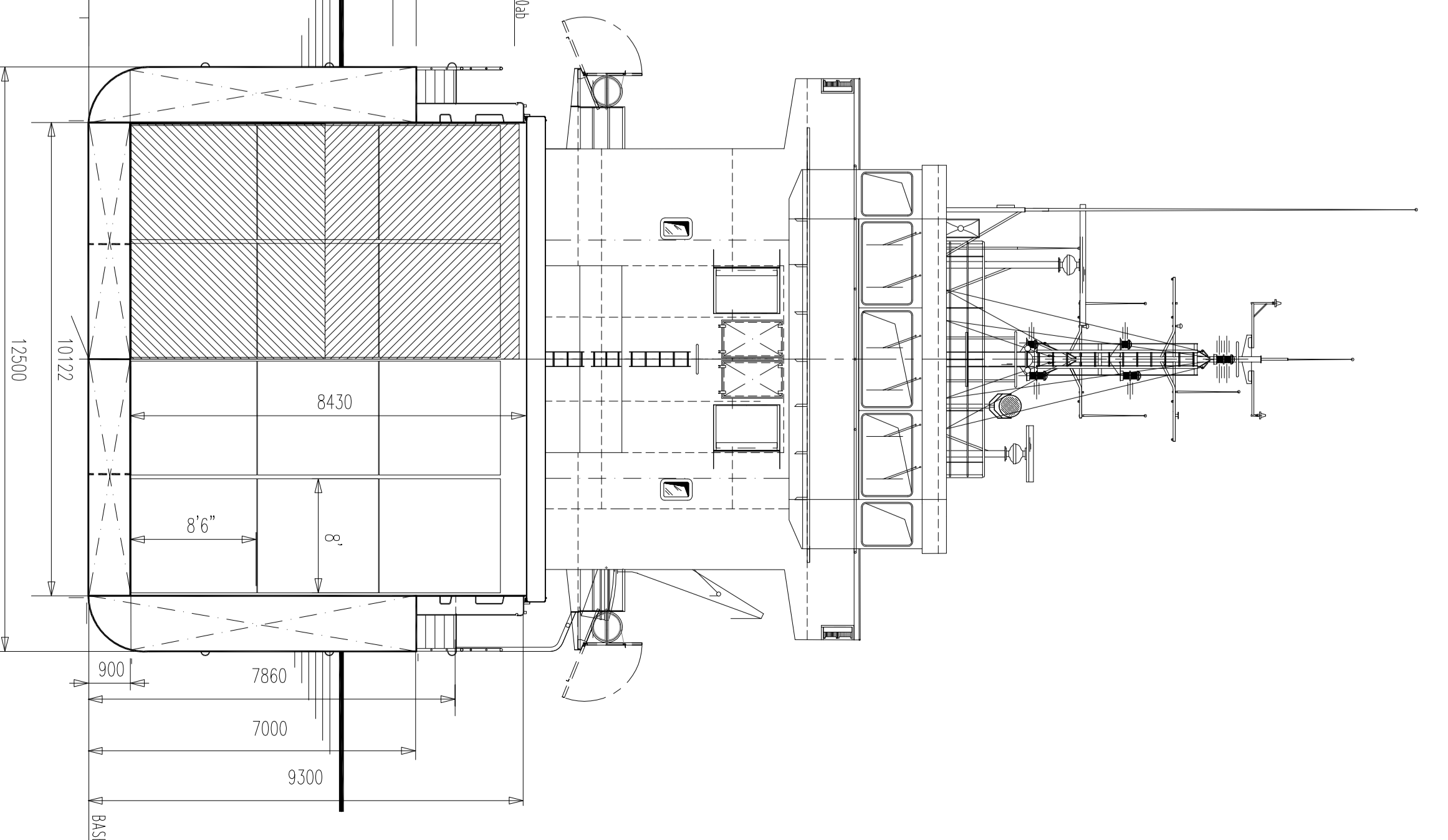
BRIDGE DECK



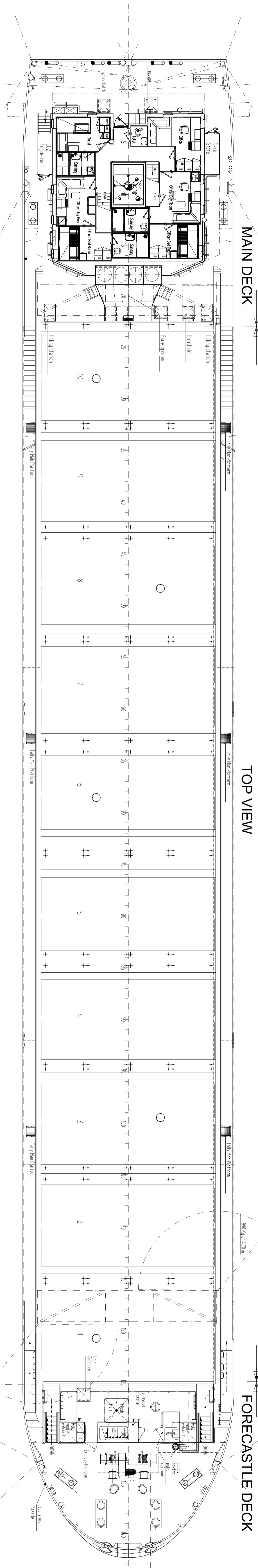
PROFILE



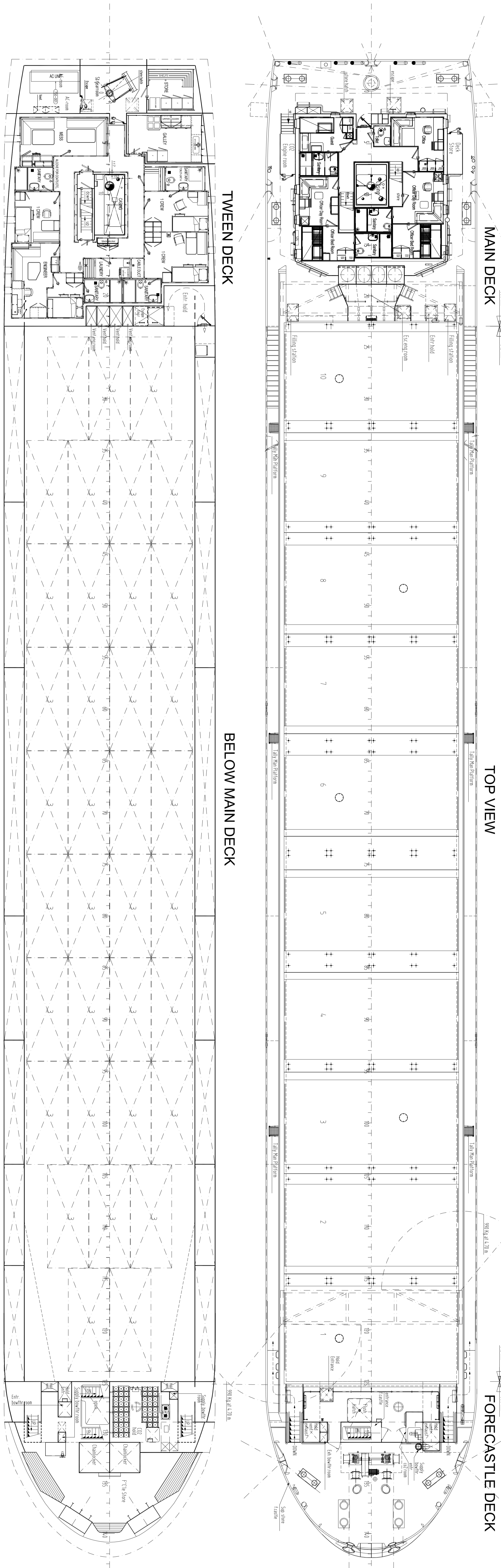
CROSS SECTION



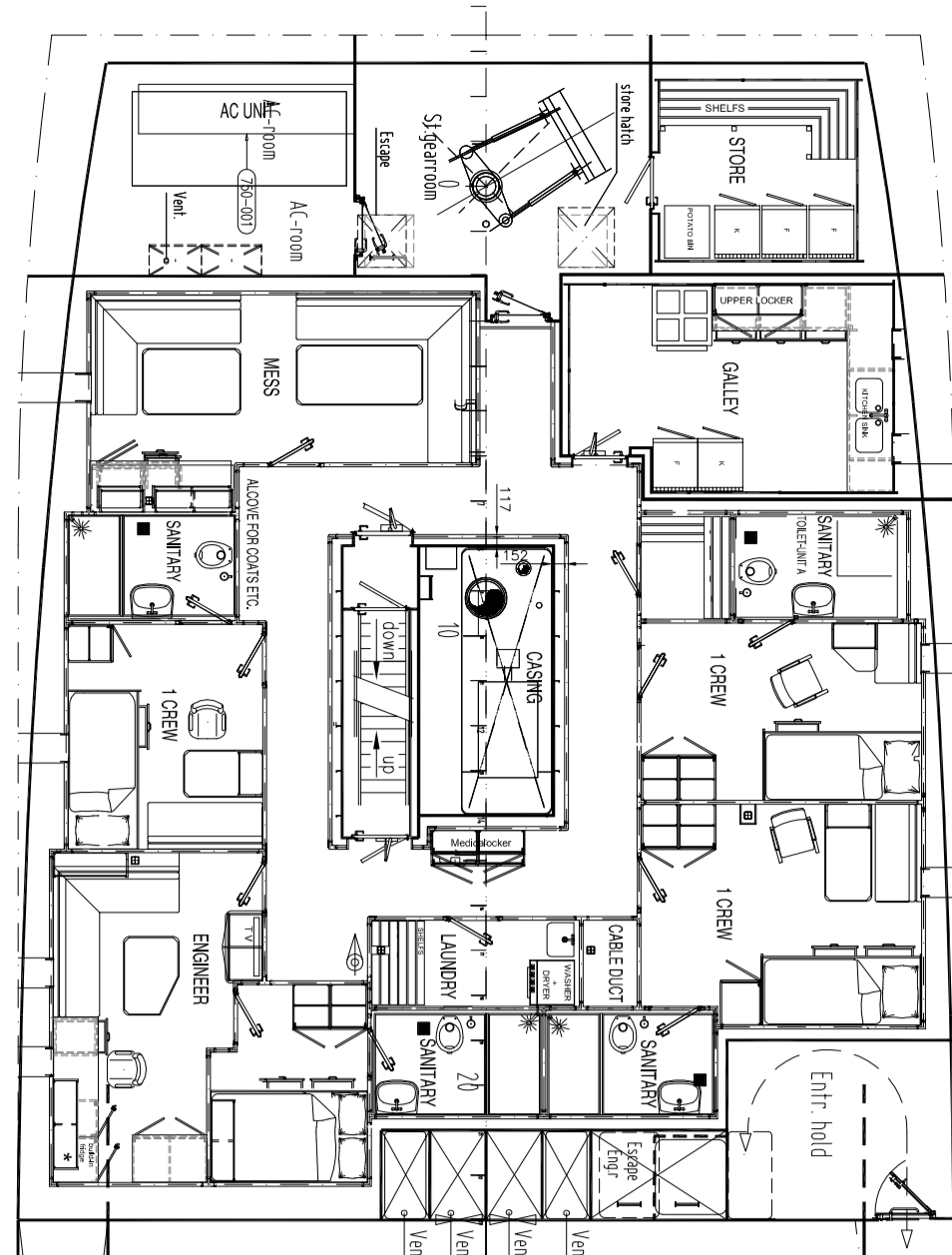
MAIN DECK



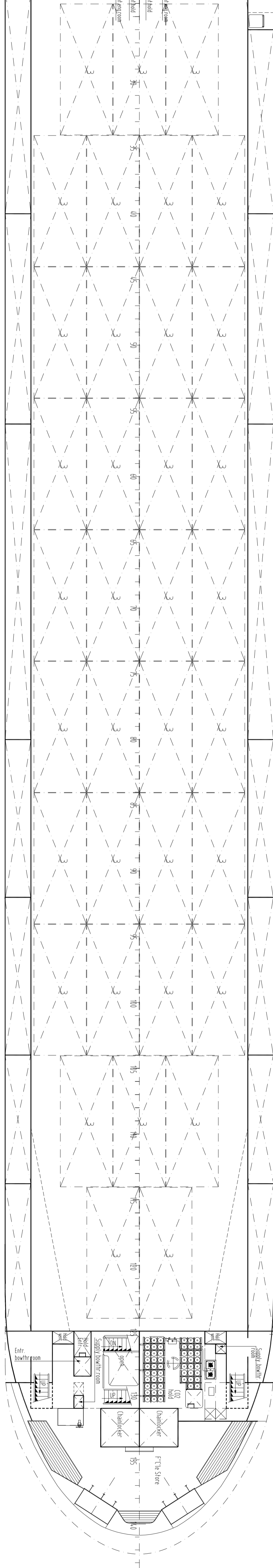
TOP VIEW



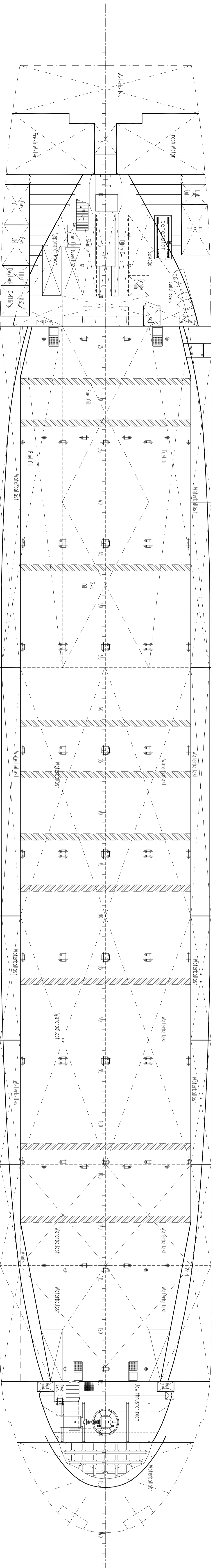
TWEEN DECK



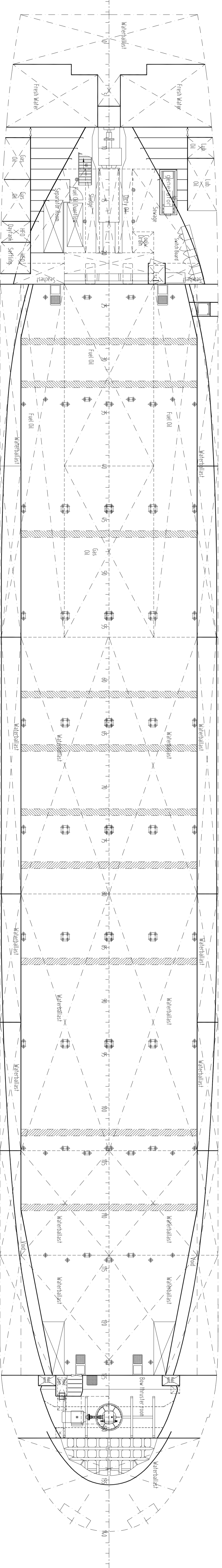
BELOW MAIN DECK



ENGINE ROOM



TANK TOP, 900 a.b.



PRINCIPAL DIMENSIONS OF CF3850

Length o.a.	88.41 m
Length b.p.	84.99 m
B.O.A.	12.977 m
Breadth	12.530 m
Depth to Main Deck	3.100 m
Depth to Main Deck (incl. 1.50 m)	3.100 m
Port height	5.472 m
Deck height at 1/2 L approx.	3800 mm
Hold capacity approx.	5250 ton
Tank capacity	
Ballast approx.	1934 m ³
Oil approx.	84 m ³
Gas oil approx.	49 m ³
Portable water	55 m ³
Lubrication oil	85 m ³
Lubrication sump oil	2.1 m ³
Dirty oil	5 m ³
Slop oil	6 m ³
Slop oil drain	2.6 m ³
Coolwater drain	2.6 m ³
Gen. air capacity	
In hold	108 TEU
On field	68 TEU
TOTAL	176 TEU

Length approx. 297' 0"
 Class
 - LRS 100 A1, strengthened for heavy cargoes LMC, LMS + ICE 1E, containers in hold and on upperdeck hatchcovers. Strengthened for loading aground.

DAMEN DAMEN SHIPYARDS BELGIUM

GENERAL ARRANGEMENT

TYPE	CF3850	DESIGNED FROM	DMG 0300000000001152
COMP. NO.	9415	DWG. NO.	9415-0000
SHEET	1	SHEET	1
REVISION	E	REVISION	E